



REC# : 752830
 RECORDED 5/8/2019 AT 1:19 PM BK# 2620 PG# 1872
 Debra K. Lee, CLERK OF LARAMIE COUNTY, WY PAGE 1 OF 1

STATE OF WYOMING CORNER RECORD

(In compliance with the CORNER PERPETUATION AND FILING ACT, Wyoming Statutes, 1997 Section 33-29-140, et. seq., and the Rules and Regulations of the Board of Registrations for Professional Engineers and Professional Land Surveyors)

SOUTHWEST CORNER SECTION 14, T. 18 N., R. 63 W., 6TH P.M., LARAMIE COUNTY, WYOMING

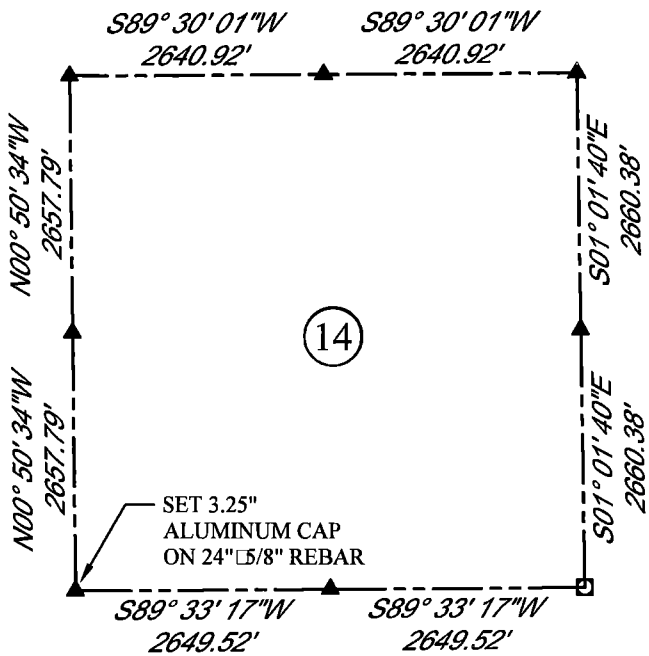
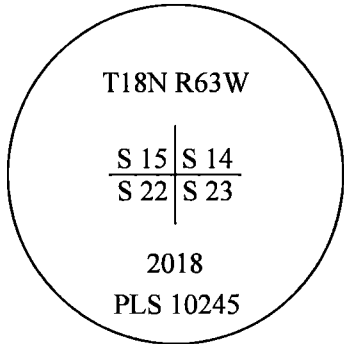
GLO: SET A SANDSTONE 18X12X6, 10 IN. DEEP, MARKED WITH 3 NOTCHES ON S. SIDE AND 3 NOTCHES ON E. SIDE FOR COR. TO SECS. 14, 15, 22, 23.

FOUND: NOTHING. SET ALUMINUM CAP AT PROPORTIONATE(DOUBLE) DISTANCE.



SCALE: NONE
 NORTH DETERMINED BY
 G.P.S OBSERVATIONS

SET 3.25" ALUMINUM CAP
 ON #5 REBAR, AT SURFACE,
 STAMPED AS SHOWN.
 PLACED A SMALL MOUND
 OF STONES ON
 N. SIDE OF CORNER.



LEGEND:

- FOUND BLM CAP
- FOUND USFS CAP
- FOUND STONE
- FOUND PRIVATE MONUMENT
- ◆ CALCULATED POSITION
- ▲ SET MONUMENT (LS10245)
- SECTION LINE

DATE OF FIELD WORK: 9/24/2018 OFFICE REFERENCE: MERIDEN

CROSS INDEX DIAGRAM

A	1	2	3	4	5	6	7	8	9	10	11	12	13	14	15	16	17	18	19	20	21	22	23	24	25	A	
B																										B	
C																											C
D																											D
E																											E
F																											F
G																											G
H																											H
J																											J
K																											K
L																											L
M																											M
N																											N
O																											O
P																											P
Q																											Q
R																											R
S																											S
T																											T
U																											U
V																											V
W																											W
X																											X
Y																											Y
Z																											Z

WOOD
 2615 AVIATION DRIVE
 SHERIDAN, WY 82801
 PH: 307-675-6400



THIS CORNER RECORD WAS
 PREPARED BY ME OR UNDER
 MY DIRECTION AND
 SUPERVISION,
 SEAL AND SIGNATURE

